

CHILDCARE - Contact Di O'Connor on **53941127** or **0427799718** if wishing to enrol your child.

C.W.A. - Held at the Beulah Memorial Hall every third Thursday, contact Jenni Turnbull on **5395 4232** for details.

BEULAH RED CROSS - Contact Clarice Hogan **5390 2403**.

SENIOR CITIZENS - Every second Monday, contact Cass Witte **5390 2370**.

BEULAH LIONS CLUB - Contact President Mark Phelan on **53982012**

PATCHWORK GROUP - Held at 77 Phillips St. (Learning Centre) every Monday, contact Michelle Hallam **5390 2346** for details.

TOLE PAINTING - Held at 77 Phillips St. (Learning Centre) on the 1st and 3rd Thursday of every month, contact Betty Shannon on **53902257** for further details.

CREATIVE MEMORIES - Meet regularly at the Learning Centre, phone Jenni Turnbull **5390 2331**.

OTHER BUSINESS CONTACTS

TELEPHONE NUMBERS

Kevin Hoffmann Electrical	0419 385 237
Gary Poulton's Power House Plumbing	5390 2413
Jonesy's Refrigeration & Washing Machine Repairs	0429 957 278
C & JM Naylor Engineering	0429902363
Swiss Vet—Kathryn Fuller—Rainbow	0427957321
Beulah Autofinishing (TerryDavies)	5390 2363
Warracknabeal Veterinary Clinic	5394 1100

Beulah

\$2.00

Information

Booklet



Local Phone Numbers of Interest

Beulah Police Station	000
Beulah Fire Brigade	000
Ambulance	000
Beulah Primary School	5390 2332
Yarriambiack Shire	5398 0100



“Roundabout Beulah”

Roundabout Beulah is a locally printed newspaper that is edited weekly to those who wish to subscribe to it or buy it weekly at the Business Centre. It features weekly sporting and local news. It also features public notices and adver-

Sports Minded People

The following sports/activities are available in Beulah.

Netball	Cricket	Fitness Classes
Dancing	Football	Pilates Classes
Bowls	Croquet	Walking Group
Indoor bowls	Swimming	

Tennis - competitive and social



Beulah offers a great scenic walking/ jogging/ cycling track that takes you around the creek featuring the sporting bollards and the natural flora and fauna.

Golf can be played at Brim, Warracknabeal (all year) and Hopetoun.

MOBILE LIBRARY

The Wimmera Regional Mobile Library comes to Beulah every second Wednesday **Times are; 10am - 12.30 pm**

Check dates at the Milk Bar. or in the local Roundabout Newsletter's Community Calendar.

Free Membership

BOOKS BOOKS BOOKS

Beulah Business & Information Centre

has a wide varieties of books at their 2nd hand book store. Call in

SHANNON BROS.

Atlas Fuel, NW Ag Services

38 Henty Highway

Ph. 5390 2264

For all your diesel, fuel, pet food, metric polypipe and fittings, safety gear, water tanks and landscaping needs

Local Recycling Centre

This transfer station is situated along the Birchip Road about 2 kilometres from Beulah and is open on -

Wednesday 1 pm - 3 pm

Friday 1 pm — 3 pm

Sunday 2 pm—5 pm

Garbage Collection

The green wheelie bins are collected at the kerb side in town each Wednesday morning at approx. 9.00 am. The yellow recycling bin collection days are Wednesday fortnightly. Collection bins can be purchased from Yarriambiack Shire. Phone 5390 0100.

Beulah Caravan Park

Situated on the bank of the Yarriambiack Creek at the Beulah Recreation Reserve. 7 powered sites as well as a camping area for tents.
Laundry and Shower facilities.

Enquiries - Beulah Milk Bar 5390 2430.

Beulah Historical Learning & Progress Association

(Trading as Beulah Business & Information Centre)

Located at 77 Phillips Street, Beulah

Phone & fax 5390 2331

Email : beulahbic@bigpond.com

Services available include :

- ◆ Post Office
- ◆ Adult Education Centre
- ◆ Historical Information and Research Centre
- ◆ Secondhand Bookshop
- ◆ Meeting rooms & Internet facilities for hire
- ◆ Overhead projector and screen for hire
- ◆ Photocopying, Fax & Scanning service

Rural Northwest Health Services

'Beulah Primary Care and Community Centre'

Cnr. Henty Highway & Bell St. Beulah

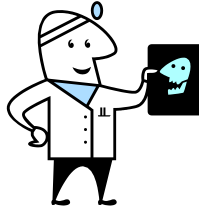
All consultations Bulk Billed

Dr Ahmad Rahim

For Dr's appointments -

phone **53968200**

Monday 9.00 am - 11.45 am,
Wednesday 2 pm—4 pm
Friday 9.00 am—11.00 am



Services provided from the Beulah Campus

District Nursing, Physiotherapy, Counsellor,
Exercise Physiology, Planned Activity Group,
Asthma Education, Ante Natal & Domiciliary
Care and Occupational Therapy

Nearest Medical Centres After Hours

Hopetoun 5083 2000

Warracknabeal Campus 5398 1000

SOCIAL WORKER

Sybil Braybrook is our resource person who has access to a wide range of information and contacts:

- A support person who can check if you have access to everything that you are entitled to and follow up on referrals if you need support
- A person who can advocate for you
- A qualified professional with training in social health issues.

**Blackwood's
Beulah store**

**Incorporates "Mick & Michelle's IGA Grocer"
Great stock of Groceries and Butchers meat
Newsagency, Commonwealth Bank Agency, V/Line
Agency, Dry Cleaning, Tattslotto, Clothes, Gift Lines**

Phone: 53902220

Hours: 7.30 am to 5.30 pm Monday to Friday

Closed over lunch hour Mon - Thursday

9.00 am to 11 noon Saturday Mornings

BEULAH MILK BAR:

Phone 5390 2430

**See Snow & Lee for your take away food, delicatessen,
fruit, vegetables and DVD hire.
Now Stocking Wellington's Meat**

**Hours: Monday to Friday 8.00 am to 8.00 pm
Saturday 8.00 am to 1.00 pm & 5.00 pm to 8.00 pm
Sunday 9.00 am to 1.00 pm & 5.00 pm to 7.00 pm**

***Restricted hours on all Public Holidays
Closed on Good Friday and Christmas day***



BUS SERVICES

- ♦ **V-LINE** –Beulah’s IGA store is your local
- ♦ **V/Line Agency (Ph. 5390 2220)** or call 136196 for bookings and enquiries.
- ♦ **V/Line Services available : To & from Melbourne**
- ♦ **(call in at IGA and pick up your free Timetable)**
- ♦ **Henty Highway Service**
Travels from Mildura to Horsham on Mon. Wed & Fridays & returns on Tues. Thurs. & Fridays.
Mildura > Horsham > Mildura on Fridays only.
(Bookings essential on 5390 2220 or 0427 865 379)
Also see ‘Transport Services Guide for the Shire of Yarriambiack’ available at the Post Office

HAIRDRESSER

Stacey’s Hair & Beauty Salon operating Monday and Tuesdays only by appointment - Phone 0439 941 197

See Stacey Holland at 77 Phillips Street,

FLUTTERBUYS OPPORTUNITY SHOP

Voluntarily Run

COSTUME SHOP

(at the Memorial Hall)

Both shops in Phillips Street

Ask at Post Office or the café for more details.



Chemist

Beulah Medical Supplies - 61 Phillips Street

Phone 5390 2231

Depot of Warracknabeal Pharmacy.

Beulah Medical Supplies also have a great gift selection and stock a good variety of toiletries, photo frames, and medical needs.

Drop your scripts in by 1.00 pm for same day delivery.

EFTPOS AVAILABLE

Dentist

There is no local Dentist here in Beulah but there are services in Warracknabeal. Phone 5398 1553

There is a public Dentist at Wimmera Base Hospital in Horsham. For appointments ring 5381 9111 or the Horsham Dental Clinic on 5381 9248

POST OFFICE - Phone 5390 2200

(77 Phillips Street)

ATM MACHINES

Unfortunately there are no **ATM** machines in Beulah but you can access Eftpos machines at most local businesses.

Banks

National Bank Agency,

63 Phillips St. Beulah,
Ph. 5390 2208.

Hours: 1.30 pm to 3.45 pm

Monday and Friday only.

Commonwealth Bank Agency

at Beulah IGA Store and the Post Office.

Victoria Hotel

The hotel opens at 11.00 am and closes at approximately

10.00 pm. Closed all day Sunday.

The hotel provides counter lunches 12 noon to 1.30 pm weekdays and counter teas on Saturday nights from 6.00 pm to 8.00 pm. Catering for Birthday, Anniversaries and all celebrations - bookings necessary.

Phone **5390 2248** Eftpos machine available.

BP Service Station & Hardware Shop

M & L Williams, 105 Henty Highway,

Beulah. Ph. **5390 2363**

Fuel available weekdays & till 11.00 am
on Saturdays.

**Auto Gas available only in
Warracknabeal & Hopetoun**



Church Services

Catholic Church - Contact Joan Naylor **53902139**

Uniting Church - Contact Graeme Turnbull **53954232**

Uniting Church Minister Rev Jeff Dart

Can be contacted Warracknabeal on 53982520

and Father Claridge

Primary School

The Beulah Primary School is located on the Henty Hwy on the southern end of Beulah **Ph:**

5390 2332



The school has 26 students with 3 permanent staff and 3 casual staff members.

Kindergarten

The Beulah Outreach Kindergarten is a service provided by Yarriambiack Shire Council and has Monday morning sessions for 3 and 4 year olds . Contact Gavan Blinman on 5398 0131

Secondary Colleges

There is no Secondary College in Beulah but buses deliver the secondary students to Hopetoun, Warracknabeal and Birchip Schools.

The buses leave at approximately 7.30 am and arrive back in Beulah at 4.20 pm approx. depending on which school.

Playgroup meets fortnightly, contact Bridget Williams on 5390 2202 at Maternal & Child Health Centre